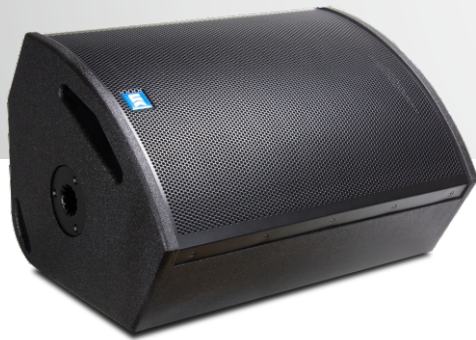


15" multi-use coaxial monitor

UC-400



Features

- Multi-function, compact two-way stage monitor, FOH, front fill and side fill.
- Passive two-way coaxial point source performance
- Rugged tour-grade durability in a lightweight, ergonomic design
- Visually-appealing, low-profile plywood enclosures
- Easy to carry and maneuver for live sound and fix installation
- Side panel rubber feet for extra protection
- Integrated Speaker cabinet flange for pole stand mounting

UC-400 Multi-Functional Monitors deliver a new level of reference performance from compact, two-way coaxial designs.

In addition to their primary use as live sound stage monitors, they can also serve as short-throw, full range sound reinforcement speakers (with or without subwoofer) and are appropriate for a wide range of permanent installations.

The internal details of the cabinet were selected in order to maximize internal volume while maintaining a low stage profile to preserve sight lines.

The input panel is recessed into the rear of the speaker, protecting connectors within the cabinet envelope.

The panel includes NL4 input and loop-through connections.

UC-400 Multi-Function Monitors are an attractive investment for live sound companies because they can be deployed in multiple system roles, keeping more of the rental inventory working rather than sitting in the warehouse until an appropriate job is booked.

UNIKA has created a library of DSP settings to optimize the speakers for specific uses. The recommended UC-400 monitor amplifier match is the UNIKA UD-154 or UD-084 amplifier series.

The constant directivity waveguide has a narrow pattern when the speaker is used horizontally as monitor, and a wide pattern when the cabinet is oriented vertically for use as a short-throw loudspeaker.

The relatively large physical size of the waveguide controls coverage more uniformly and to a lower frequency than competitive models. The dimensions and location of the waveguide interact with the woofer to effectively create a bi-pole output, enhancing coverage control through the midrange frequencies. This configuration contributes to excellent gain-before-feedback performance.

The co-axial driver and horn assembly can be uninstalled and re-installed with a 90° rotation, which also rotates the coverage pattern; this is only recommended for install applications.

UC-400 feature an integrated speaker cabinet flange for pole stand mounting located in the side panel.

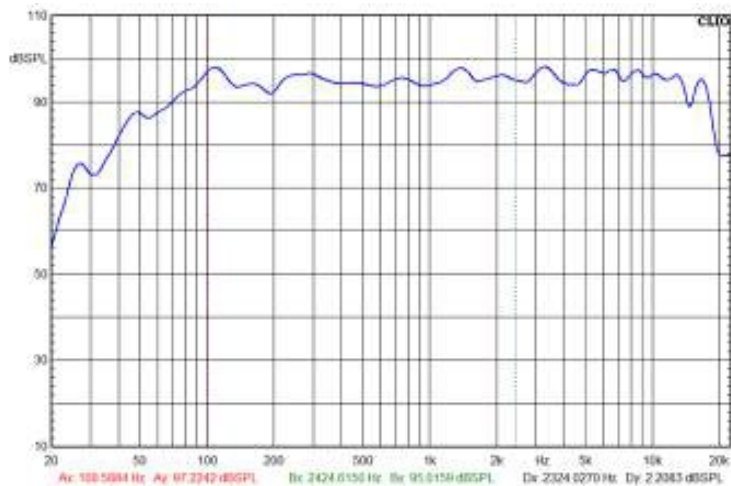
TECHNICAL SPECIFICATIONS

UC - 400	
Frequency response (-3 dB)¹	40 Hz - 18 kHz
Transducer	B&C 15HCX76-8
Magnet Material	Neodymium Ring
Max. SPL²	132 dB
HF coverage angle	60° x 40°
Cross-over frequency	1.2KHz
LF Nominal impedance	8 Ω
LF sensitivity¹	99 dB (1 W/1 m)
LF Power handling³	400W(Nominal),800W(Continuous)
Former Materiel	Glass Fiber
HF Nominal impedance	8 Ω
HF sensitivity¹	107 dB (1 W/1 m)
HF Power handling³	80W(Nominal), 160 W (Continuous)
Diaphragm Material	Titanium
Connectors	Neutrik NL4 input with NL4 pass through
Enclosure	12-18mm Russian birch plywood
Monitor angles	30°
Color	Black
Grille	1.5-mm zinc plated steel with corrosion resistant coating
Dimensions (H x W x D)	575 mm x 440 mm x 380 mm (22.6 in x 17.3 in x 15 in)
Net weight	23 kg (51 lb.)
Color	Black corrosion resistant coating

¹Half-space with monitor preset

²Measured one meter on-axis, free field with 12dB crest factor pink noise

³Continuous power EIA-426A.



Frequency Response

